



HIGH SECURITY

# One50

THE SOLUTION



*Certificate and/or full crash test reports available on request*



**One** bollard that stops a 6.8t truck  
running at **50** mph

## Technical characteristics

### General:

Hydraulic Actuator, single effect, direct attachment through fast connector, hydraulic remote pump housed in a separate technical centre, maximum pressure 80 bars

Total weight: kg 1100; lifting weight kg 550

Electric Protection Rating: IP67

Standard operation mode: fail secure (bollard remains up if was up before shortage)

Standard rising time: **5.3 seconds**

Bollard ~TC station distance: 10 m

Bollard position information: Upper and lower limit switches

### Cylinder (bollard head)

Top: Chequered stainless steel plate

Material: Specific steel alloy

Diameter: 325 mm

Height above ground level: 1000 mm

Anti rust treatment: Zinc Based Primer

Standard color: RAL3020

Visibility element: Class II white reflective tape

### Underground Casing:

Cover: Chequered stainless steel plate

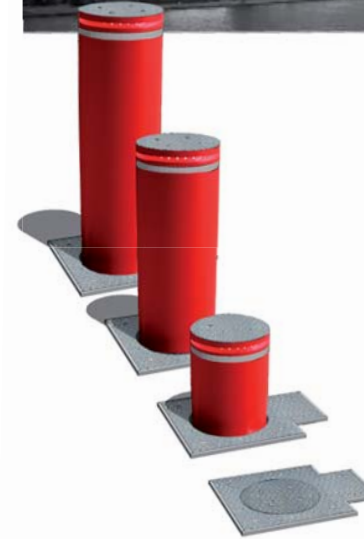
Material: steel

Dimensions (mm): H:1690; x L:490 x l:500

Technical casing (mm): L:155 x l:280



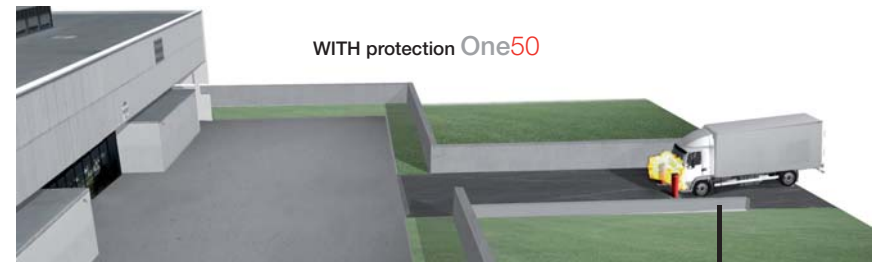
# Applications



The **One50** hydraulic bollard is designed to protect sensitive areas where the need for security of buildings and people is crucial.

A single **One50** bollard has been duly crash-tested under provision of ASTM2656 M50 Standard. It efficiently withstands the front impact of a 6.8 Ton vehicle travelling at 50 mph (80 km/h).

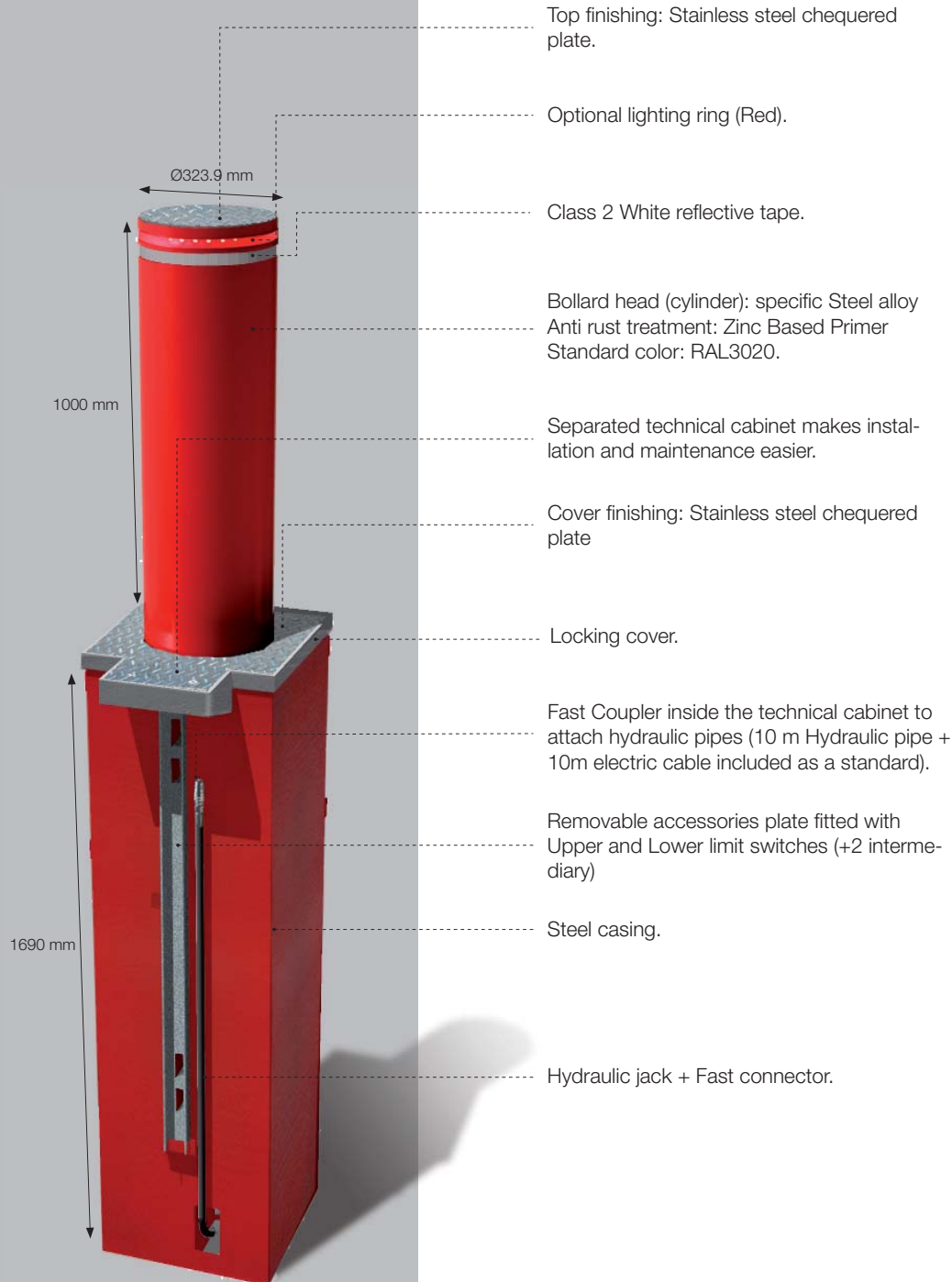
That proves the ability of the **One50** to protect embassies, public buildings, banks, military facilities, nucleare plants ect.



WITH protection **One50**



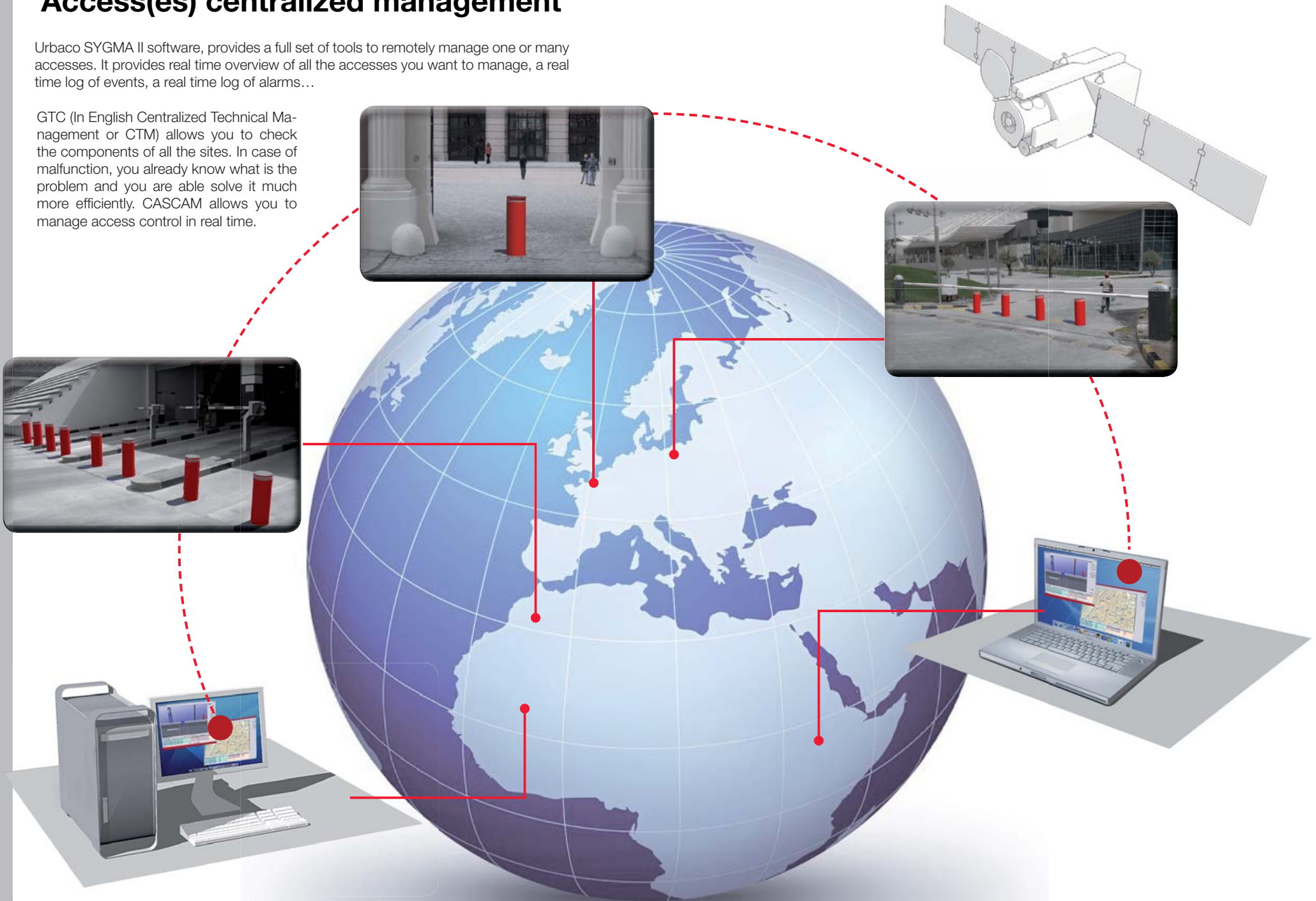
WITHOUT protection **One50**



# Access(es) centralized management

Urbaco SYGMA II software, provides a full set of tools to remotely manage one or many accesses. It provides real time overview of all the accesses you want to manage, a real time log of events, a real time log of alarms...

GTC (In English Centralized Technical Management or CTM) allows you to check the components of all the sites. In case of malfunction, you already know what is the problem and you are able solve it much more efficiently. CASCAM allows you to manage access control in real time.



# 1 Bollard standard set includes

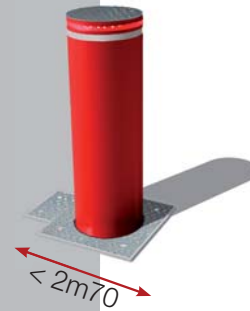
A single One50 bollard rated ASTM2656 M50 is adapted to protect a 3m wide access against a vehicle (6.8Ton, 50mph). However, according to the width of access to secure, several bollards can be installed side by side to insure the same level of security.



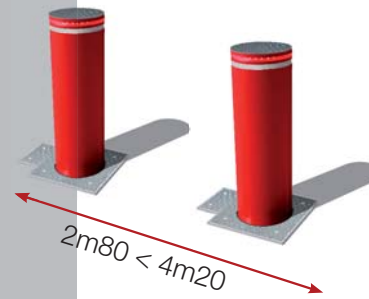
- High security Bollard
  - Lost casing
- 10 meter connection kits
- Technical cabinet with hydraulic pump
  - Control actuator
  - Fail safe function
- Heating system -20°C (for cold areas only)

# Sets

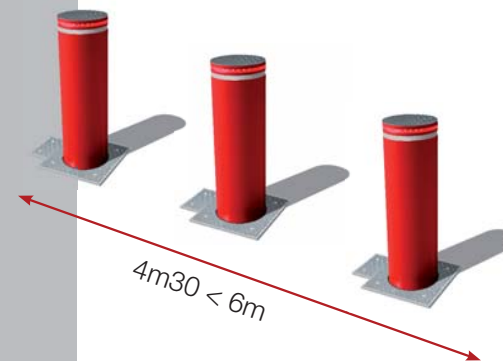
## SET OF 1 HIGH SECURITY BOLLARD



## SET OF 2 HIGH SECURITY BOLLARDS



## SET OF 3 HIGH SECURITY BOLLARDS



Installation Options  
One50 may be fixed or automatic

- For other quantities, please contact Urbaco area manager -

# Options

## BOLLARD

Bollard Head Color: Other RAL than standard  
Buzzer: signal of moving bollard by buzzer  
Red LED lighting ring (in addition to the retro-reflective band)  
Low and Up end Slowdown  
Connection kit, length above 10 m  
Rainwater Draining Pump

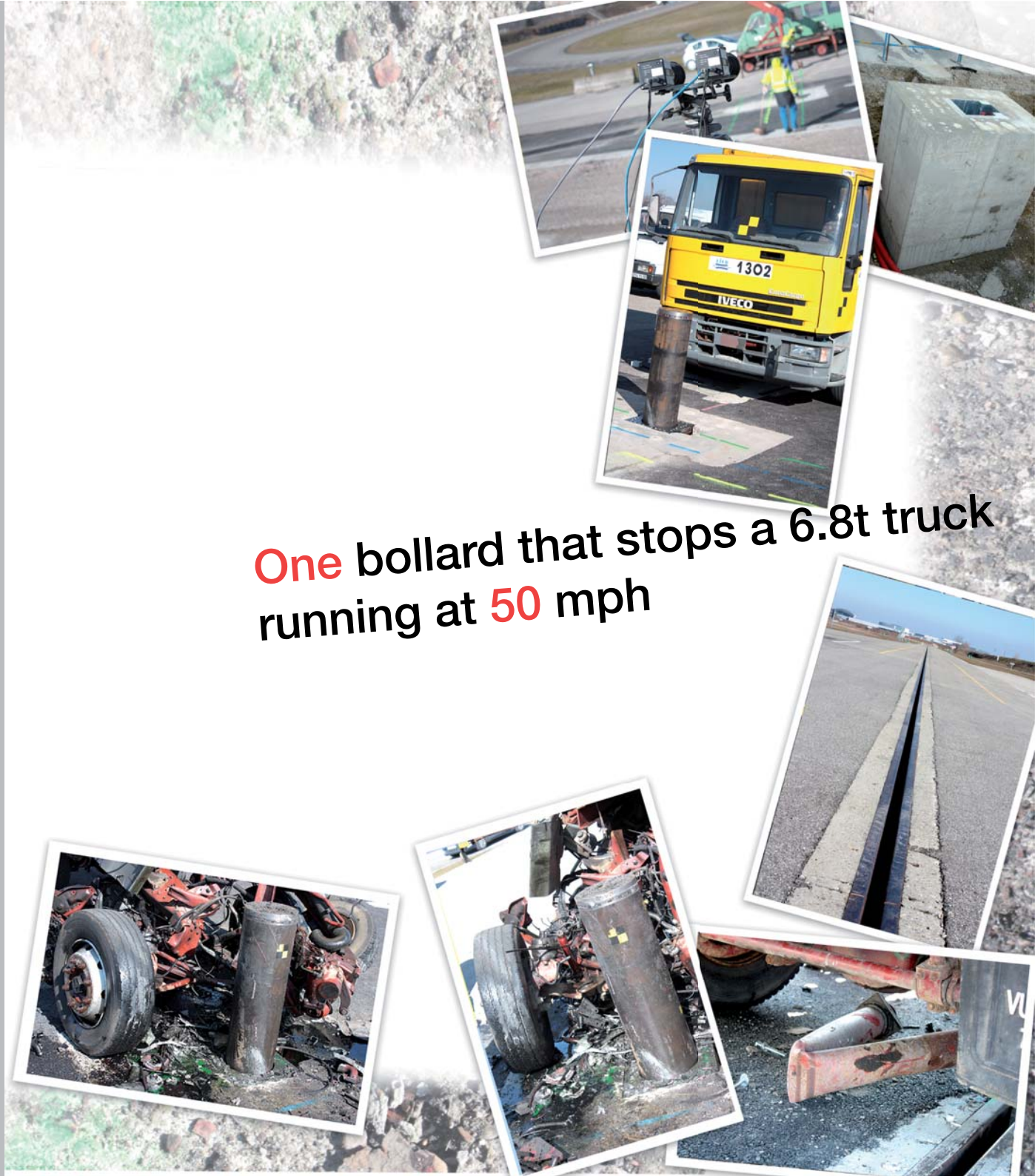
## CONTROL DEVICE

Fail safe mode (power shortage = bollards fall down)  
Manual rising command (1 per pump )  
Emergency fast rising: 1.5 seconds (requires Low and Up end Slowdown option)  
Adjustment of bollard lowering speed.

## COMMAND ACTUATORS

Remote control  
Proximity Cards  
Transponder  
RFID  
OCR  
ECT...

**One** bollard that stops a 6.8t truck running at **50** mph





**URBACO**  
AUTOMATIC BOLLARDS

Urbaco S.A.  
457 avenue du Clapier  
Z.A. du Couquiou  
84320 Entraigues-sur-la-Sorgue France  
Tél : +33 (0) 490480808  
Fax : +33 (0) 490480088  
[www.urbaco.com](http://www.urbaco.com)  
[urbaco@urbaco.fr](mailto:urbaco@urbaco.fr)

**CAMEGROUP**  
freedom innovation